



www.midcc.at

Manual

Abiotik Parameters

Connectivity Types

Assessment of habitat parameters

Connectivity Types with Screenshots

A Project by:



Hydrobotany



Department of
Limnology and
Hydrobotany



University of Vienna

The Project is
powered by



FDG Austria

The Project is
financed by



Federal Ministry for
Education, Science
and Culture

For Questions and Suggestions please contact norbert.exler@univie.ac.at or visit our Homepage www.midcc.at

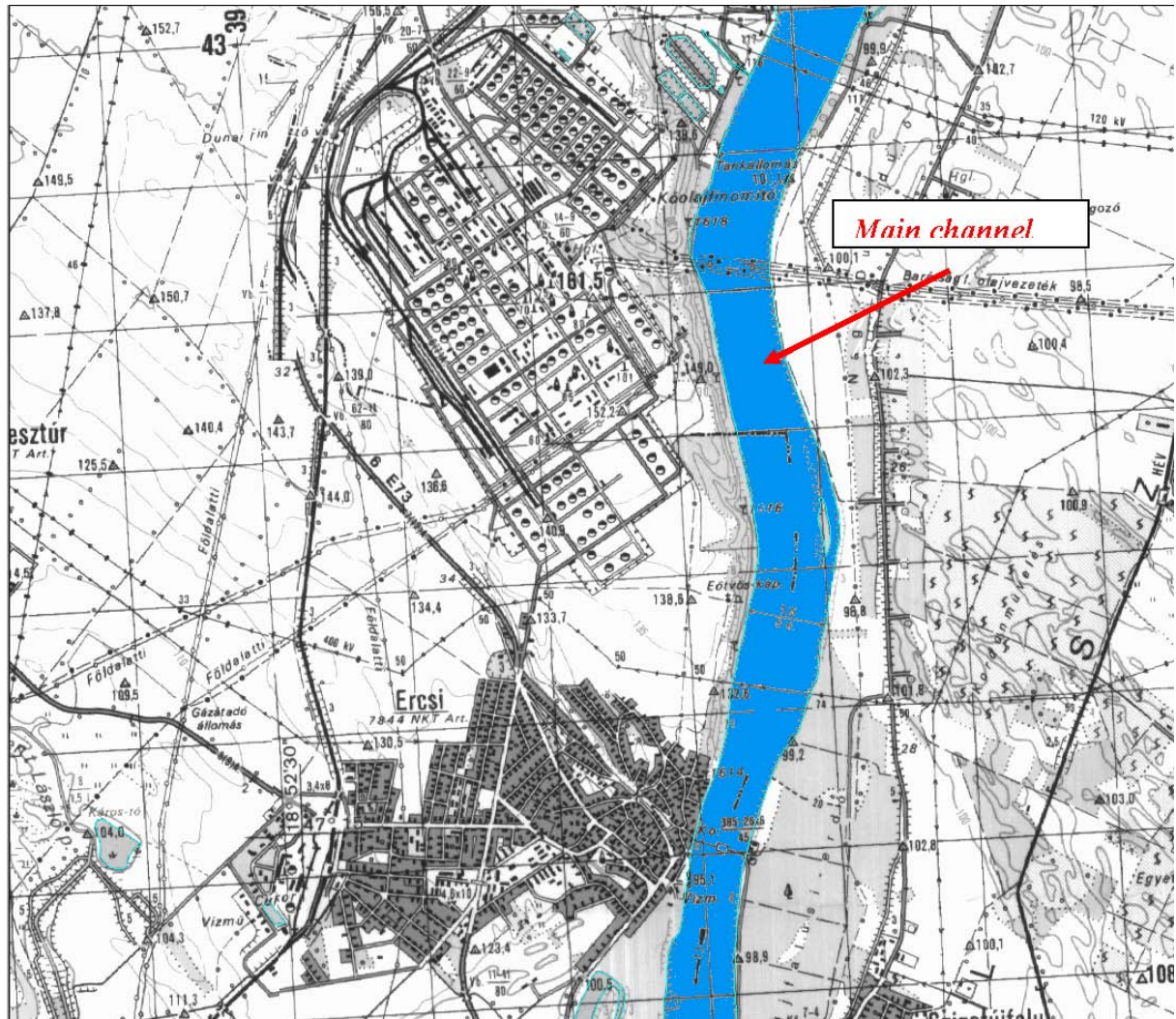
Abiotik Parameters

CONNECTIVITY TYPES

this parameter is essential for categorise the hydrological dynamics in the aquatic plant habitats.

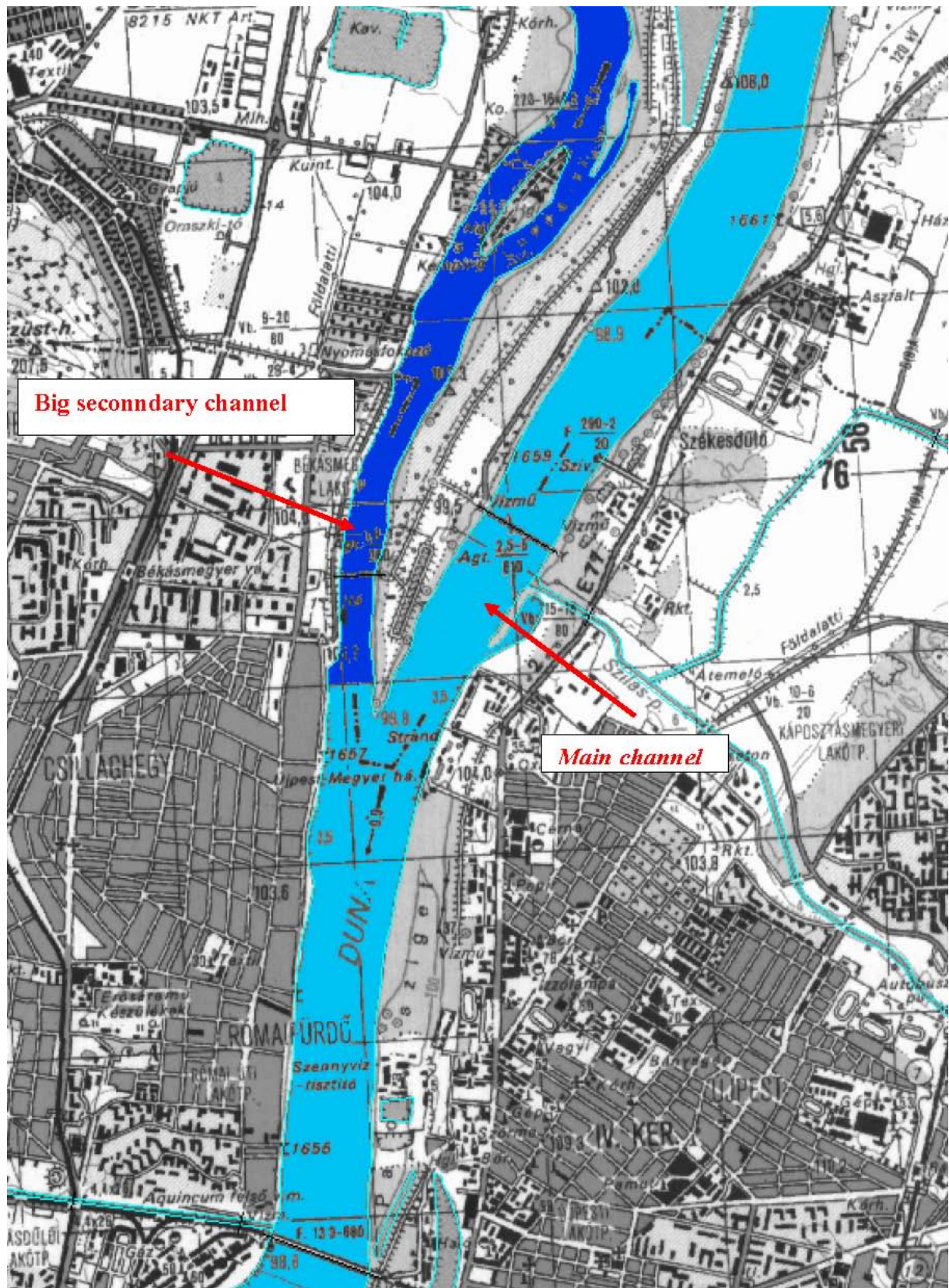
1. *small side/secondary channel*
21. *oxbow, inflow from lower end*
22. *oxbow, Inflow from upper end*
3. *oxbow, semi-separated, no permanent vegetation in connection area, which is flooded at minimum < 2years*
4. *oxbow, separated, except during floods, permanent vegetation in connection area*
6. *water body outside dam, running water (no picture)*
61. *water body outside the flood protection dam, running water*
62. *water body outside dam, still water*
81. *floodplain lake, without surface water connection*
82. *floodplain lake without surface water connection except during floods (no picture)*
85. *floodplain lake with permanent surface water connection*
90. *reservoir (artificial) (no picture)*
98. *Large secondary channel*
99. *Main channel of Danube or tributary*

99 – Main channel with international commercial navigation



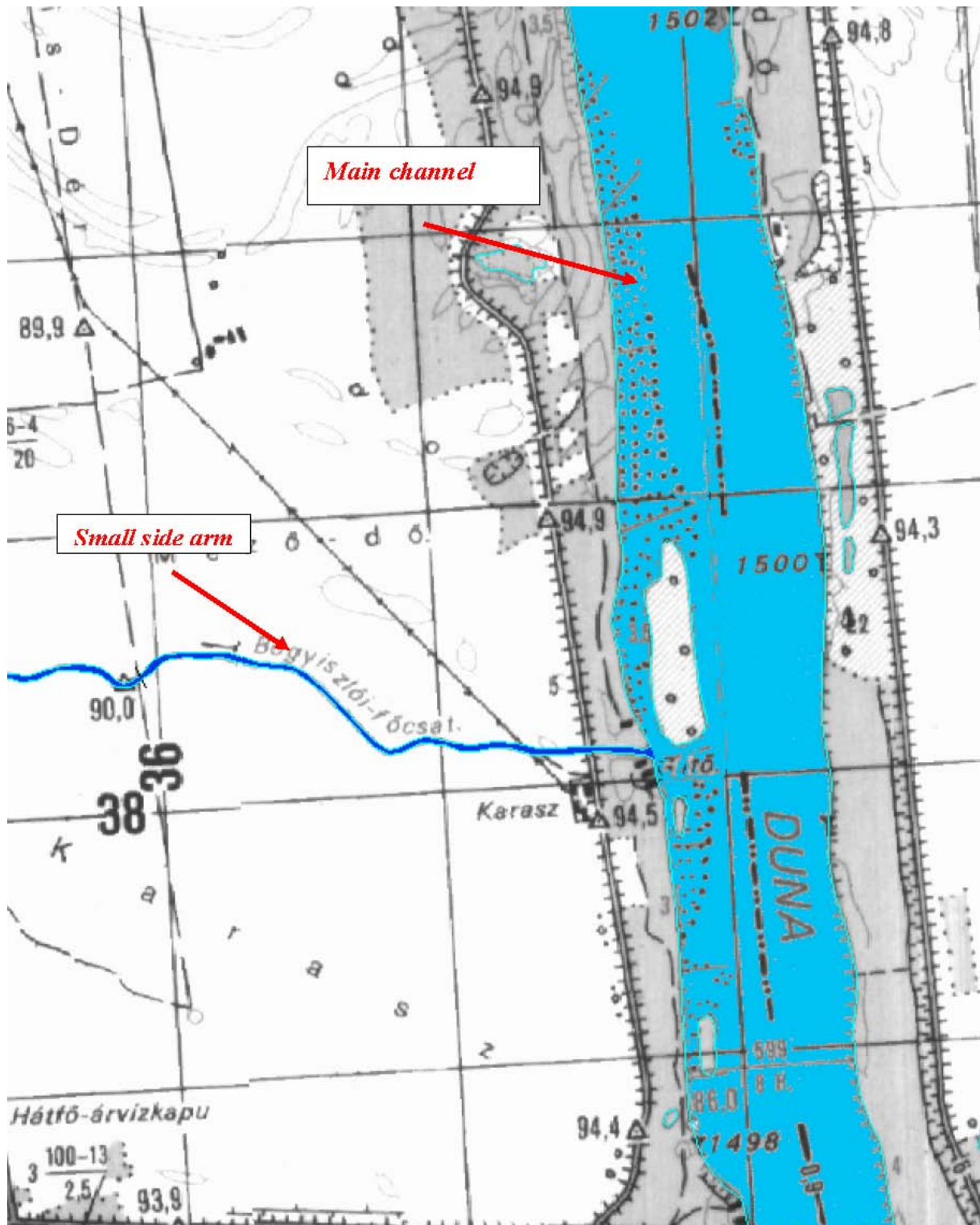
For Questions and Suggestions please contact norbert.exler@univie.ac.at or visit our Homepage www.midcc.at

98 – big secondary channel, directly connected to the main channel



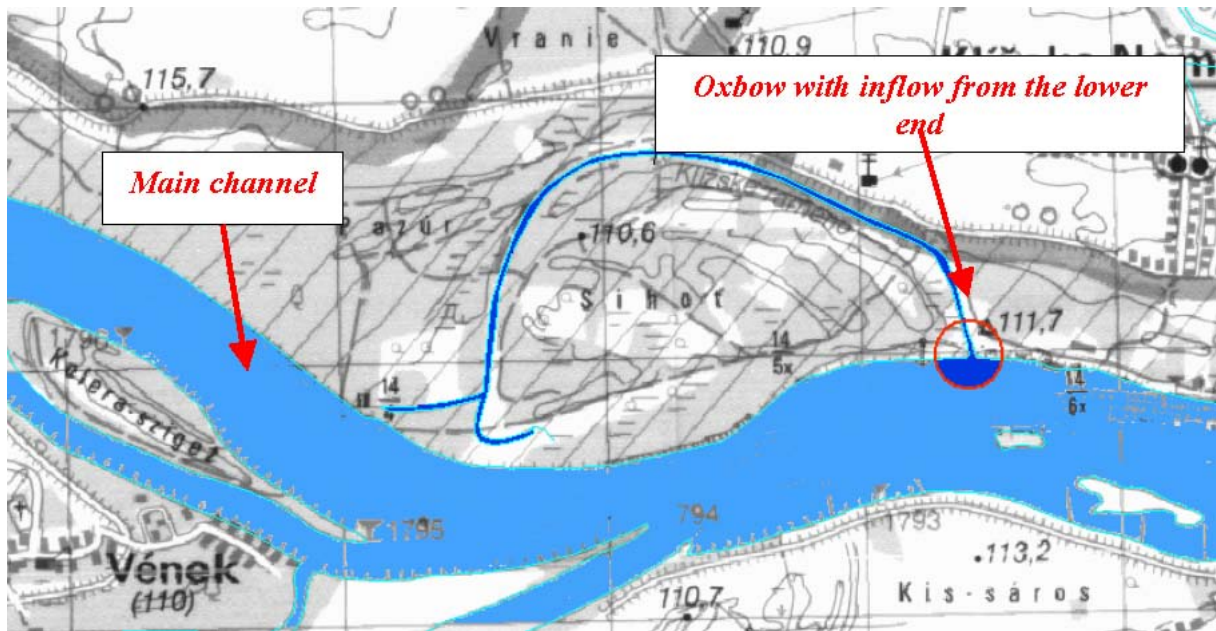
For Questions and Suggestions please contact norbert.exler@univie.ac.at or visit our Homepage www.midcc.at

1 -small side arm (of considerably smaller width than the main channel)

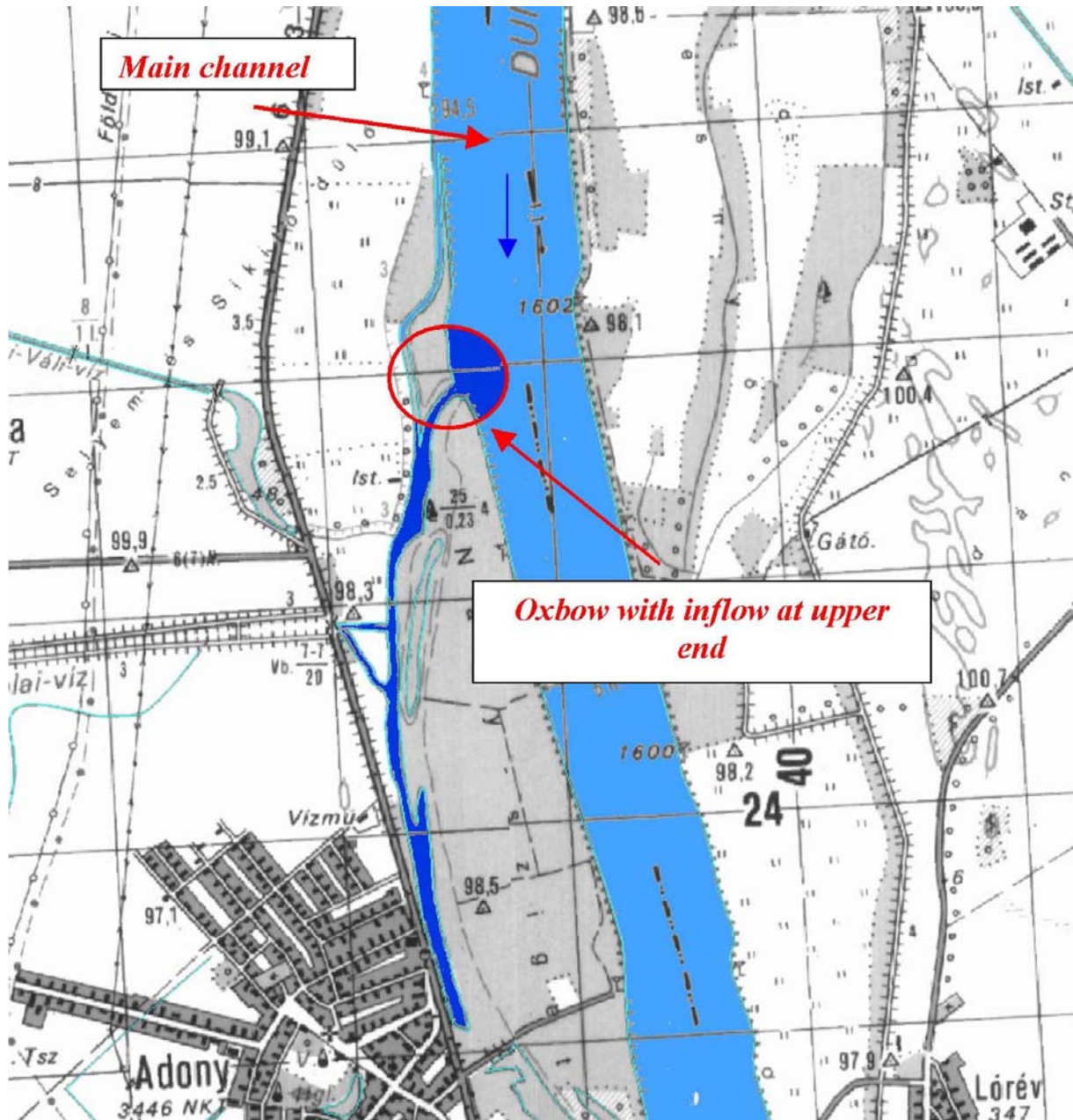


For Questions and Suggestions please contact norbert.exler@univie.ac.at or visit our Homepage www.midcc.at

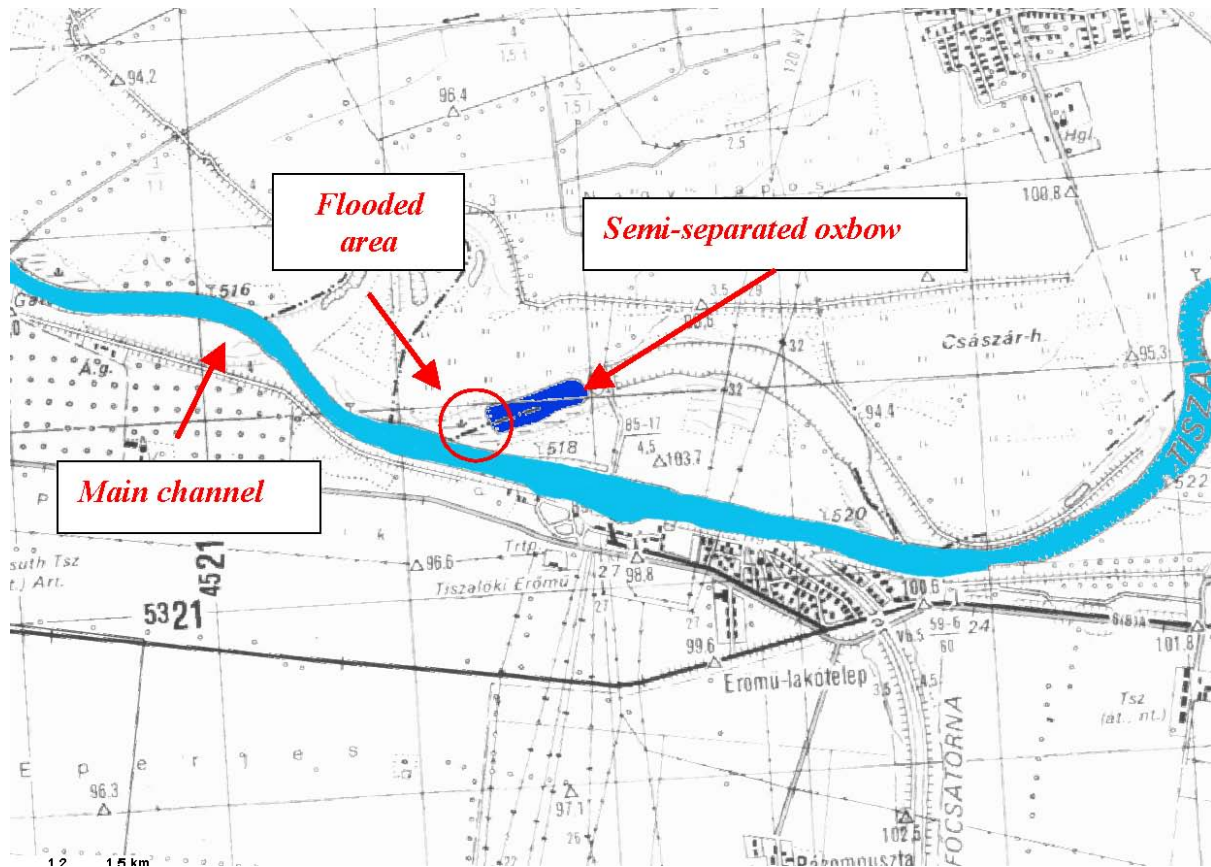
21 – oxbow with open inflow from the lower end



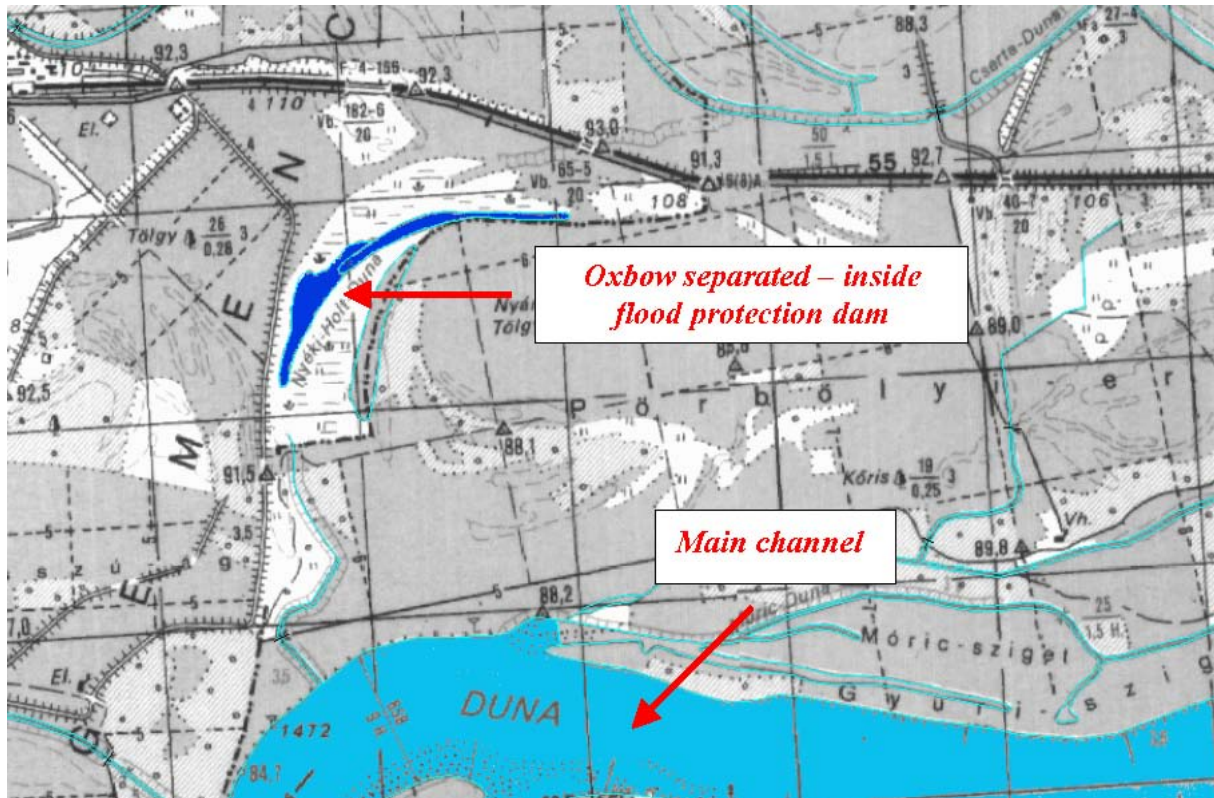
22 – oxbow with open inflow from the upper end



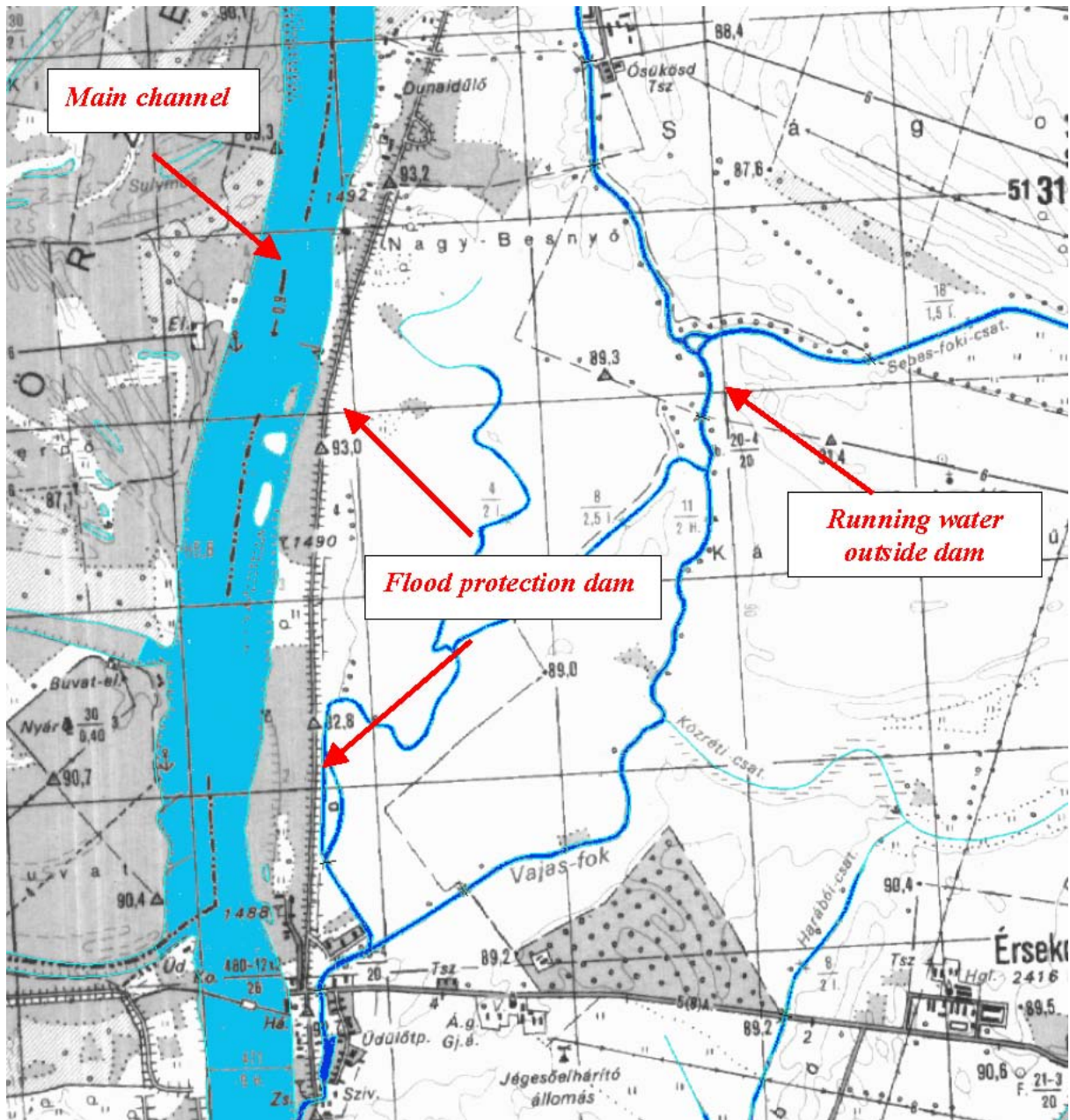
3 – oxbow, semi-separated, no permanent vegetation in the connecting stretch (flooded minimum every 2 years)



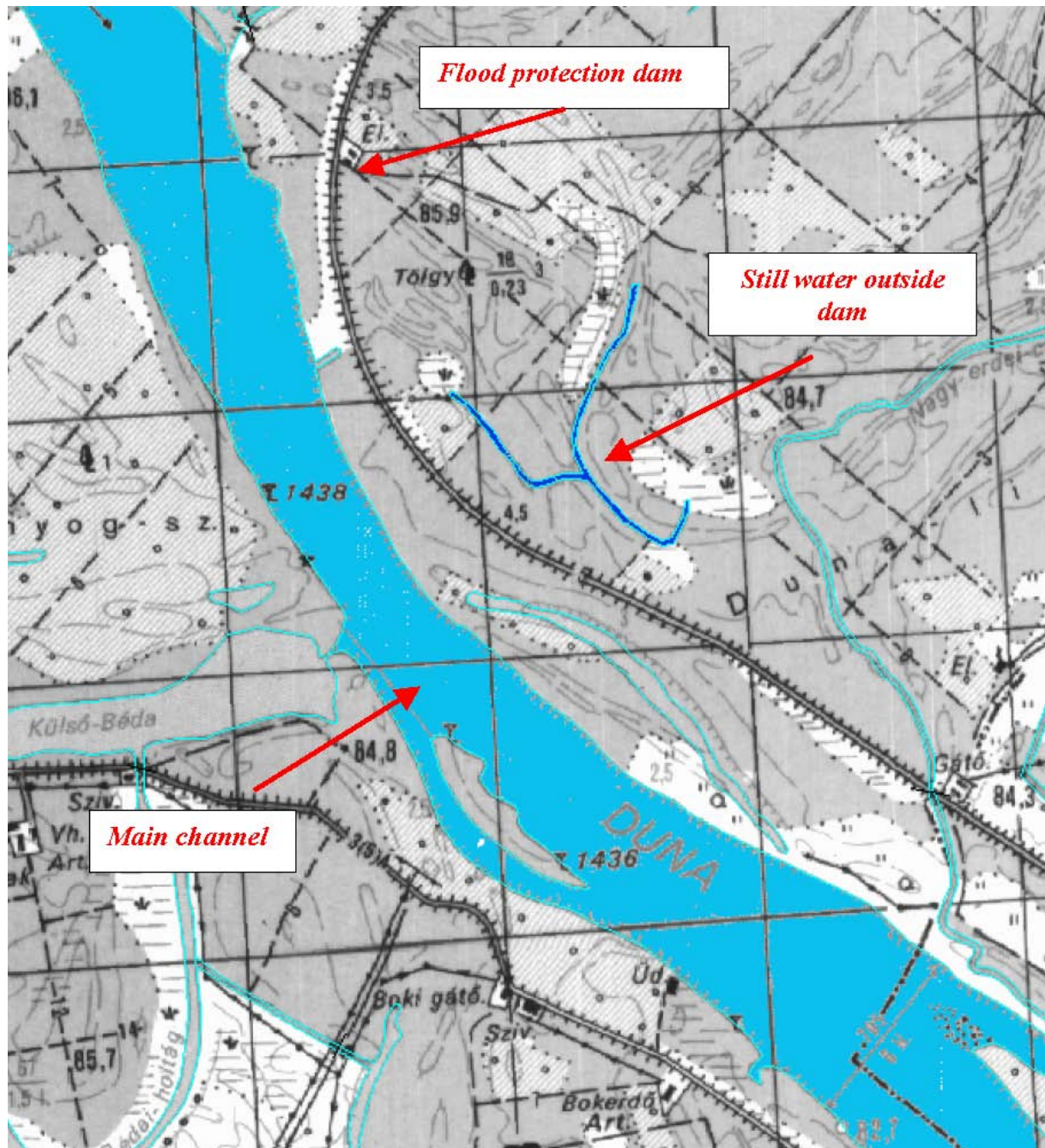
4 – oxbow, seperated, growth of higher vegetation in the connecting stretch (flooded in intervals longer than 2 years)



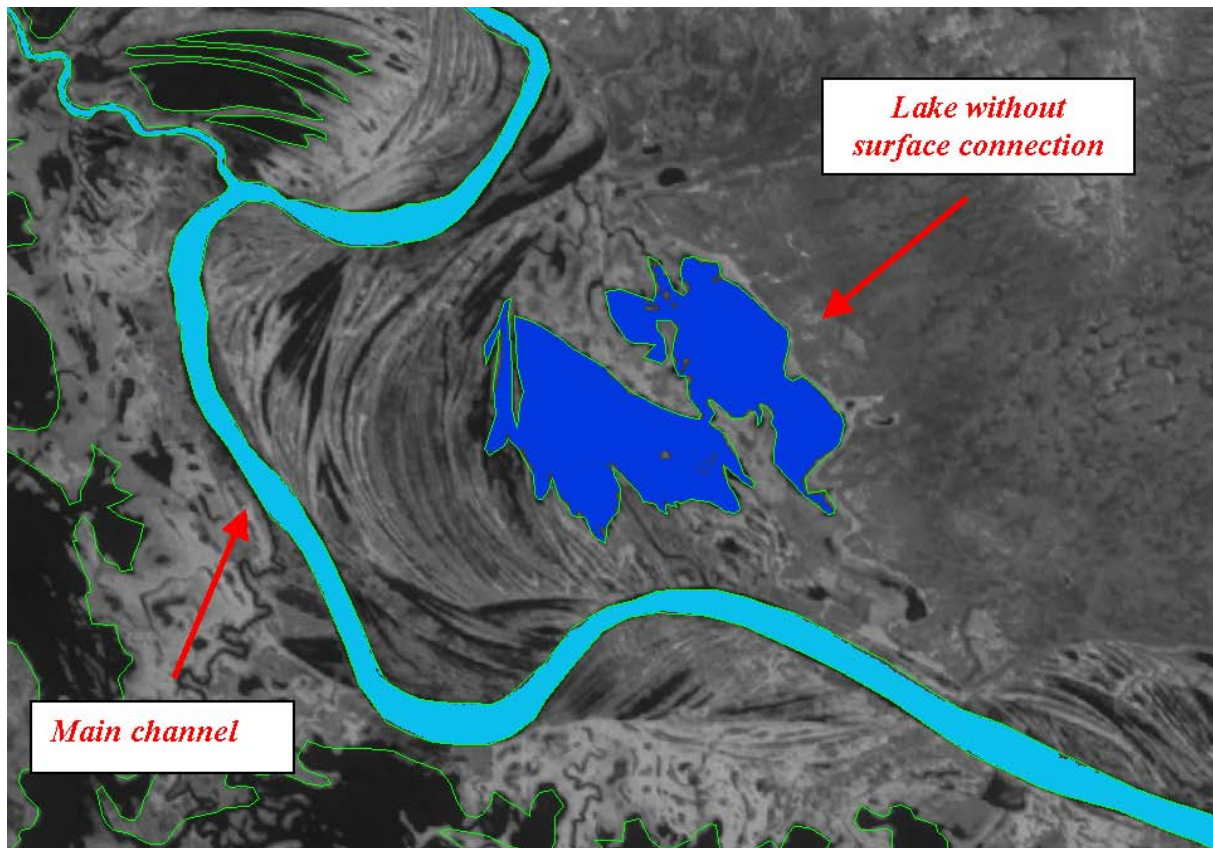
61 – waterbody outside the flood protection dam, running water



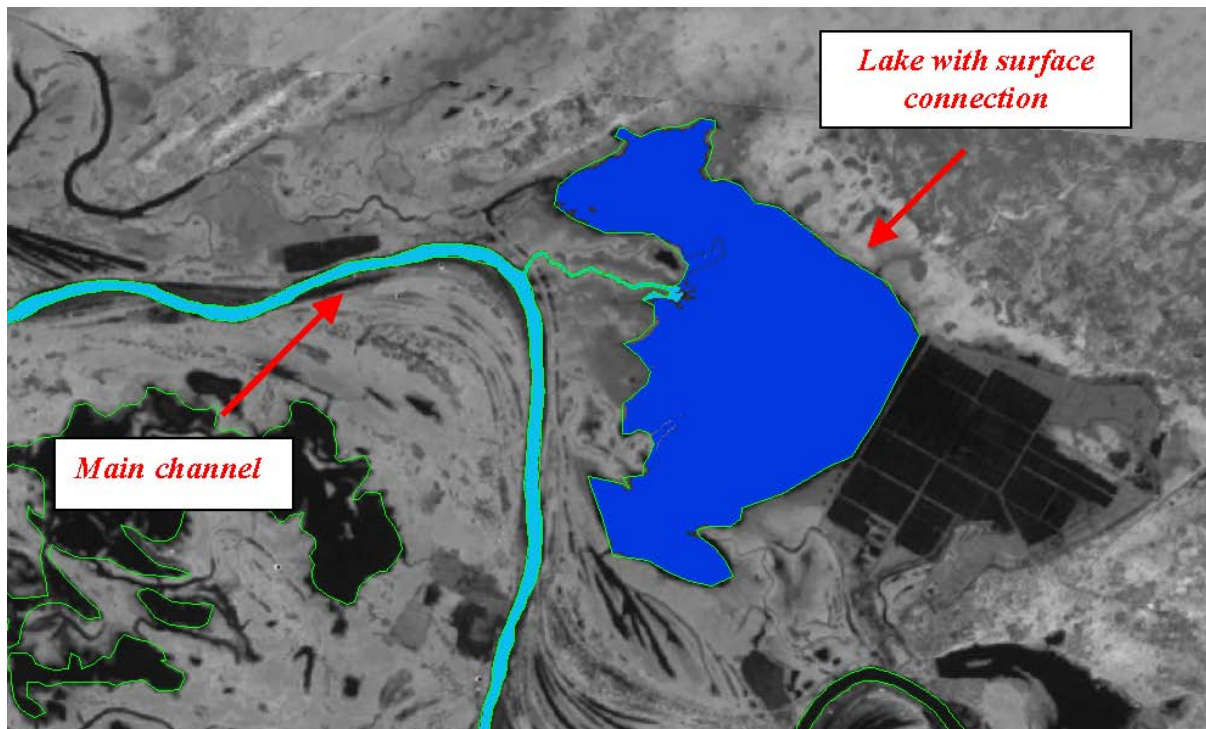
62 – waterbody outside the flood protection dam, still water



81 – lake, without surface water connection



85 – lake, with permanent surface water connection



For Questions and Suggestions please contact norbert.exler@univie.ac.at or visit our Homepage www.midcc.at